

Home Gardening to Attract Wildlife

2015 VGMA Educational Symposium

Bryce Lane

brycehlane.com



Goals this afternoon

Thinking

Feeling

Doing



This is not a talk about native plants, it's about creating spaces where people, plants, and animals can thrive in a sustainable way.

As a child growing up in Western Mass



Gardening can be burdensome!





Just this morning...

Agelenidae: Funnel Weavers

Agelenopsis: American Grass Spider



Defining Wildlife

Birds

Butterflies & moths

Bees, wasps, hornets, & spiders

Frogs, turtles, lizards, & snakes

College students!



Where do we begin? Knowledge!

Know the animals: Proboscis

Know the plants: Tubular corolla

Understand relationships

Understand needs:

FOOD

WATER

SHELTER





Guidelines for creating a garden that attracts wildlife

“If you build it, they will come” Soils are key

Variety is the spice of life: plant selection

Water attracts all kinds of wildlife

Reduce lawn square footage!

Natives work better with natives

Reduce pesticide usage: kills beneficial insects.. \$\$



FUNCTIONS OF HEALTHY SOIL

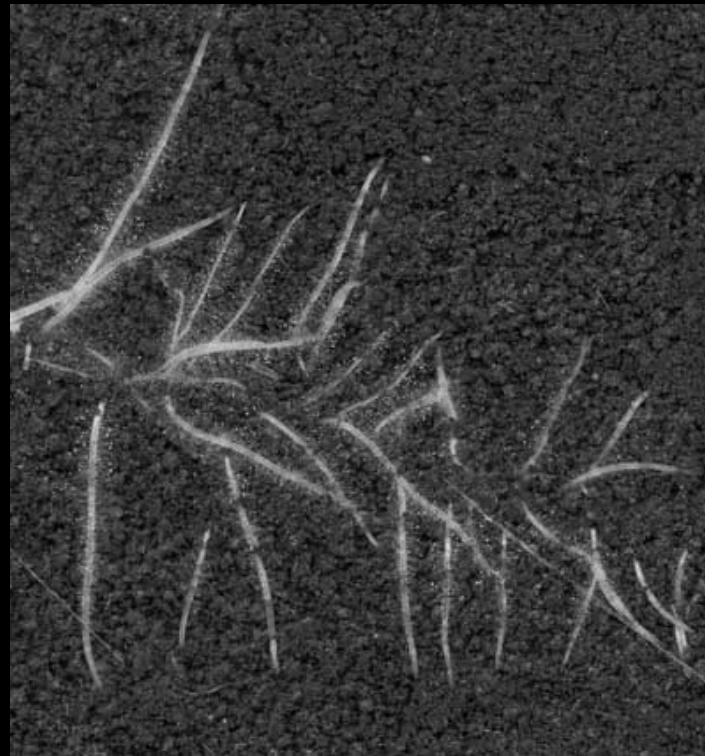
ANCHORS THE ROOT SYSTEM

SUPPLIES WATER

PROVIDES OXYGEN

SUPPLIES MINERAL NUTRIENTS

PURIFIES RUNOFF WATER



Healthy soil: Win Win

Improves water infiltration

Reduces and slows runoff and erosion

Excellent nutrient and water storage

Filters pollutants and sediment

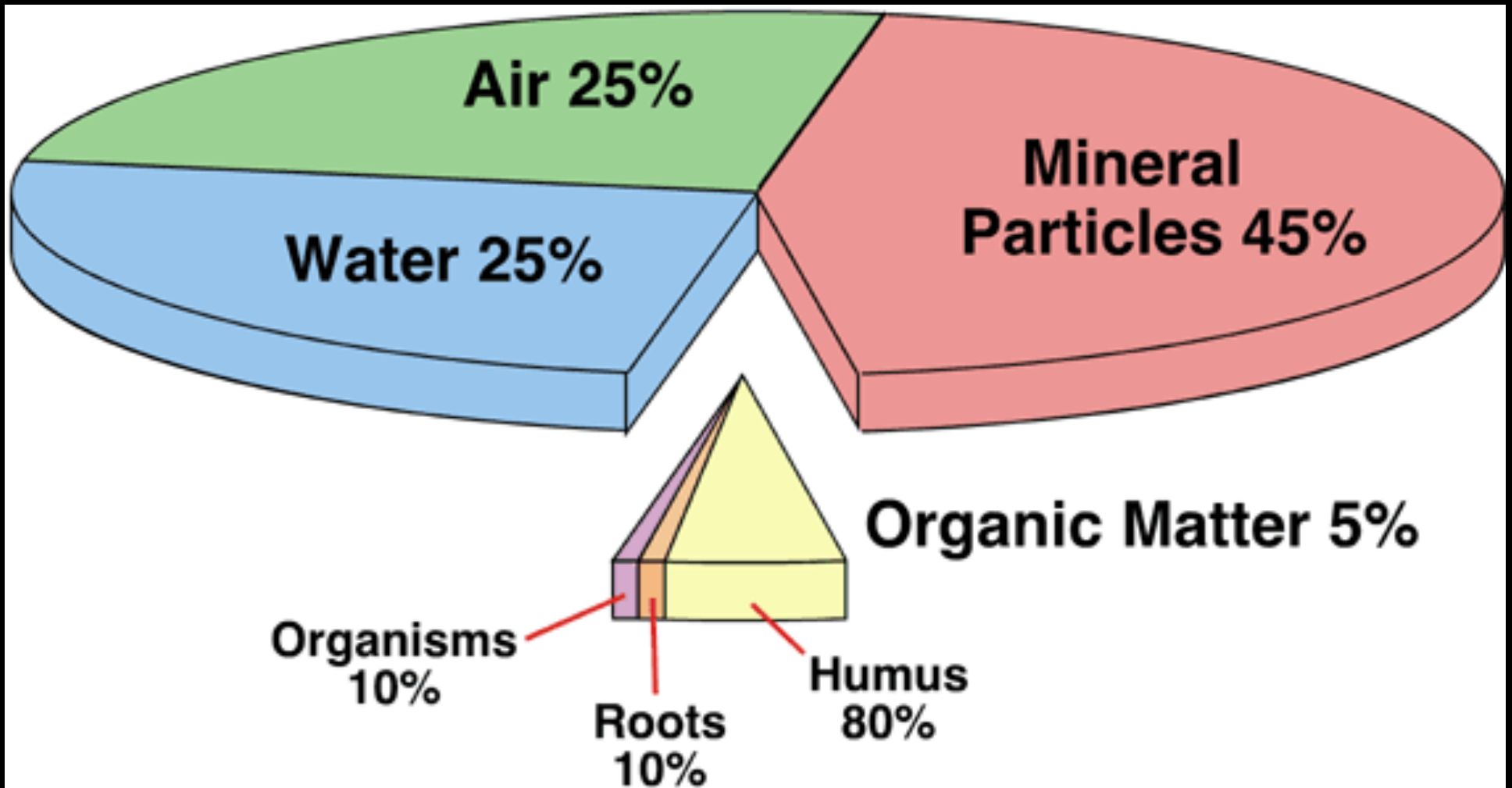
Improves soil biology and attracts wildlife

Human health and well being

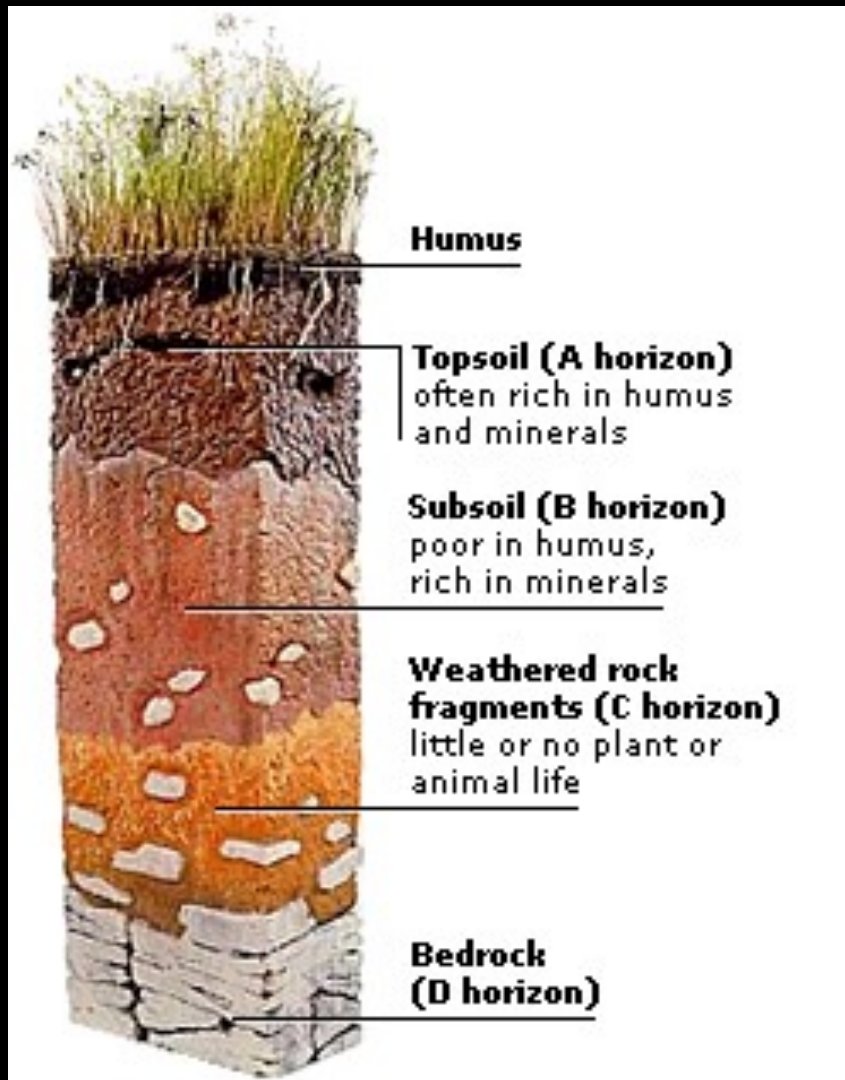
Mycobacterium vaccae



IDEAL SOIL CLASSIFICATION



Soil profile







Bed Preparation is key to good soil fertility

Soil Building is the key to success!

Cultivate

Incorporate

Invigorate

(mulch)





90% more root growth
in mulched beds than
under turf! Trees and
turf should not be in
the same place!





RE-THINKING TURF

21 million acres of home lawn

Takes up valuable space for plants that attract

#1 water user in the home landscape

Lawns require 3-6 times more water! #1 Water user

Reduce lawn square footage!!!!

Clover/Scotts 1950's







Birds: Need Shelter

Protection, resting & nesting (cover)

Multilayered landscape: trees, shrubs, etc.



Flycatcher
Crossbills
Swallows
Hawks
Band-tailed pigeons
Siskins

Owls
Jays
Kiglets
Woodpeckers
Chickadees
Nuthatches

Flycatcher
Goldfinches
Juncos
Hummingbirds
Bushtits

Thrushes Wrens
Towhees
Song sparrows

Overstory Canopy

Understory Canopy

Shrub Layer

Ground Layer



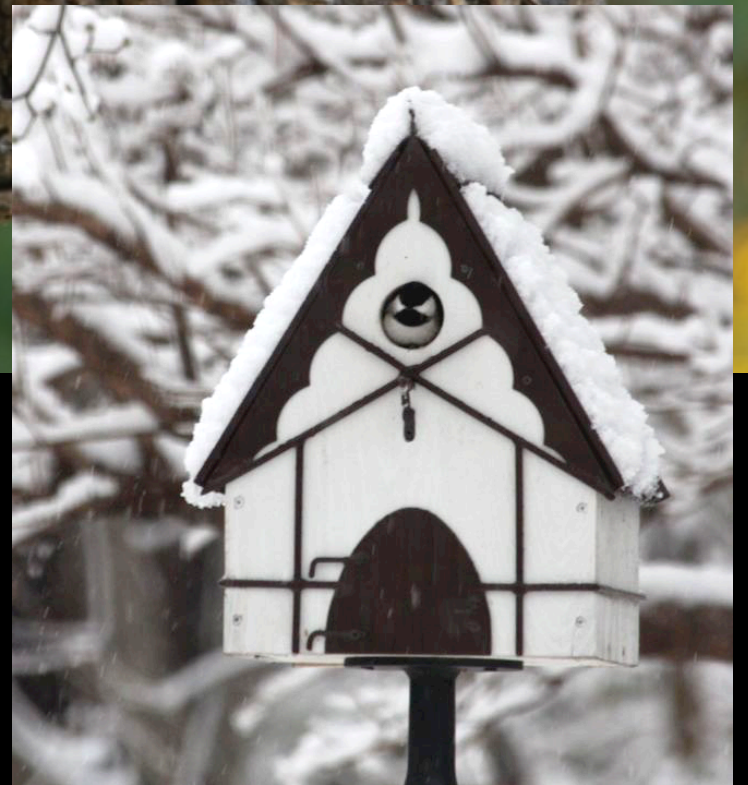












Water is so important









Food for Birds

Variety of plants that produce:
nectar, fruits, seeds, pollen



Bird Feeders are not Enough!



Callicarpa americana American beautyberry
Natives go better with natives





Viburnum



Viburnum setigerum



Viburnum nudum









Aronia arbutifolia 'Brilliantissima'

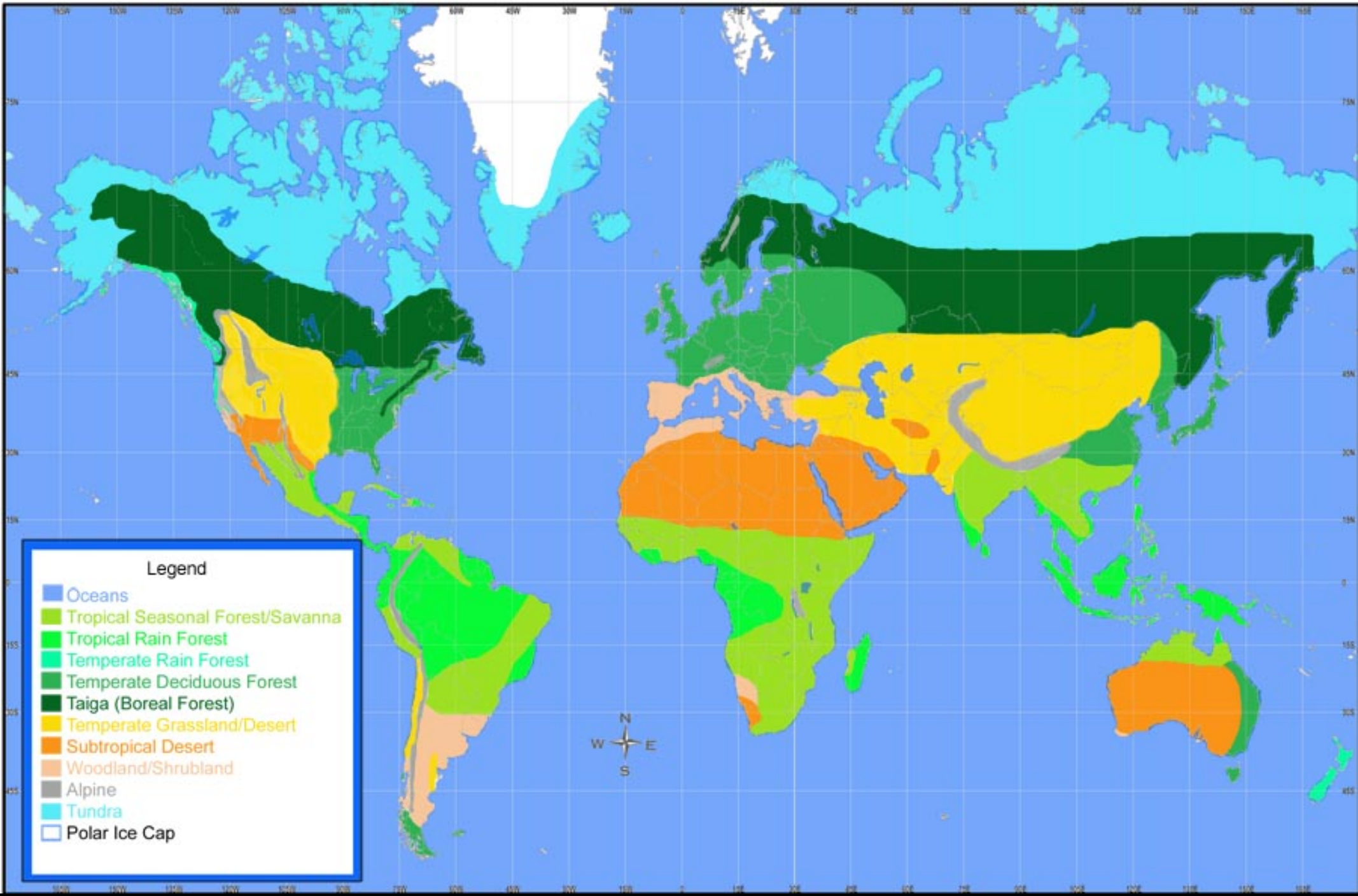


Cornus florida



Cornus kousa, Kousa dogwood





Legend

- Oceans
- Tropical Seasonal Forest/Savanna
- Tropical Rain Forest
- Temperate Rain Forest
- Temperate Deciduous Forest
- Taiga (Boreal Forest)
- Temperate Grassland/Desert
- Subtropical Desert
- Woodland/Shrubland
- Alpine
- Tundra
- Polar Ice Cap



Feeding Time 4:00 PM!



We have some great bird species!

Red-bellied Woodpecker



Wood Thrush



Titmouse



Mourning Dove





Hummingbirds

Eat nectar, insects and pollen

Wing beat: 80+ beats per second

Heart rate: 1260 beats per minute

Attracted to red

Consume 50% of their body weight per day



Top Hummingbird Plants

Deep red/orange colored flowers

Tubular or trumpet shaped

High in nectar





Aesculus pavia
Red buckeye



Malvaviscus arboreus drummondii

Lobelia cardinalis



Bignonia capreolata 'Tangerine Beauty'



Bignonia, Cross Vine



Attracting Insect Pollinators

Million Pollinator challenge
millionpollinatorgardens.org

NC DOT article

Solidago rugosa



Attracting Insect Pollinators

Million Pollinator challenge
millionpollinatorgardens.org

Use Nectar and pollen producing plants

Provide water source

Situate in sunny protected areas

Use large pollinator targets of native and non invasive plants

Continuous bloom

Eliminate or minimize pesticides





Asclepias tuberosa

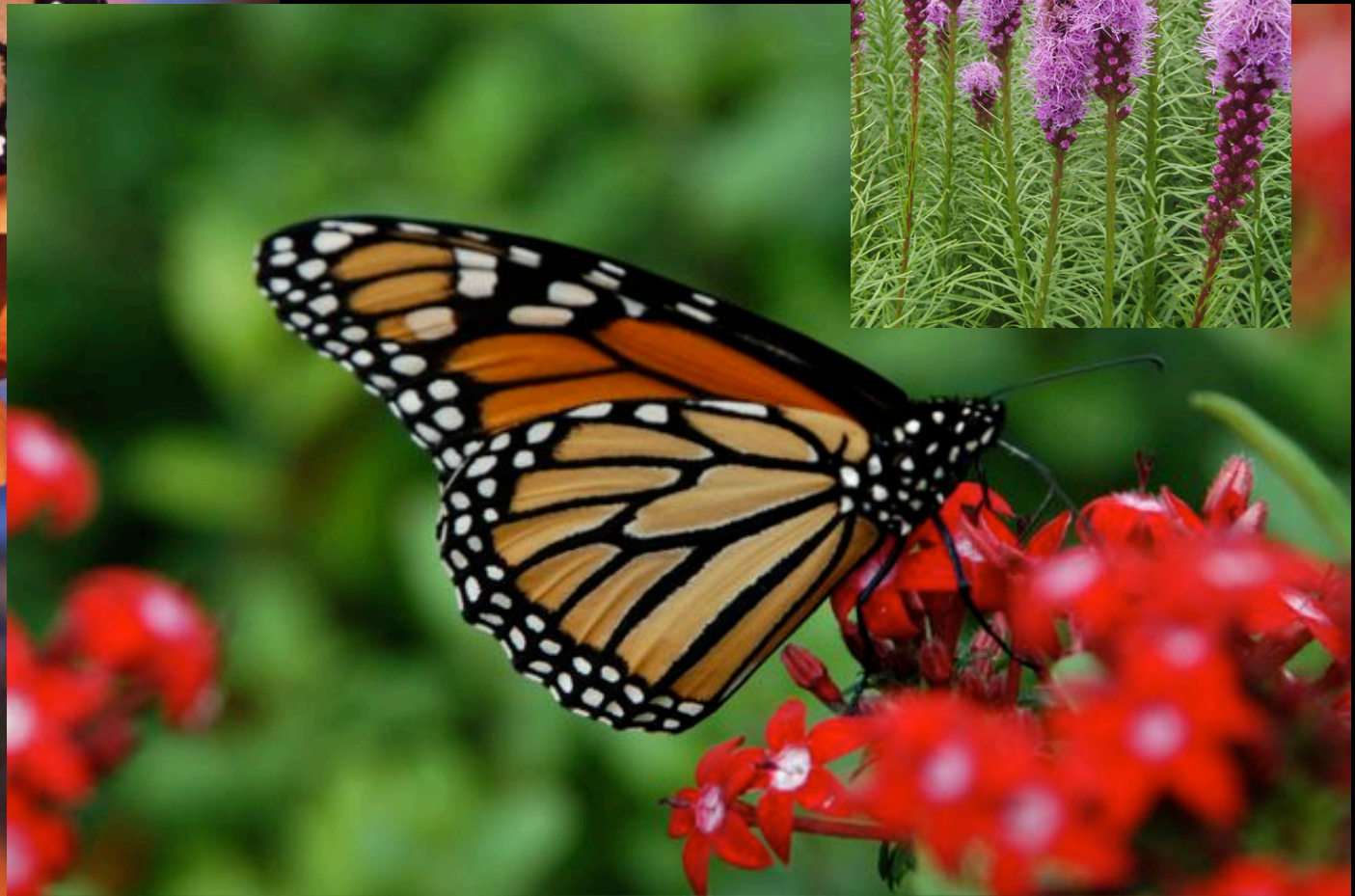




Cosmos sulphureus

Pentas

Liatris



Salvias



Spegelia marilandica

Indian Pink



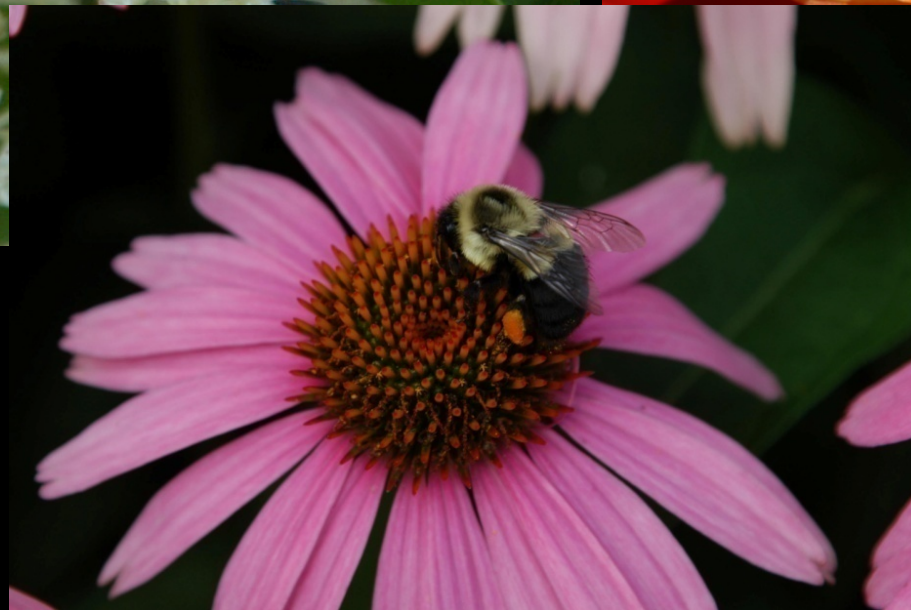
Eupatorium maculatum, Joe-Pye Weed





Bees Wasps, Hornets etc.

Cyrilla racemiflora



Monarda



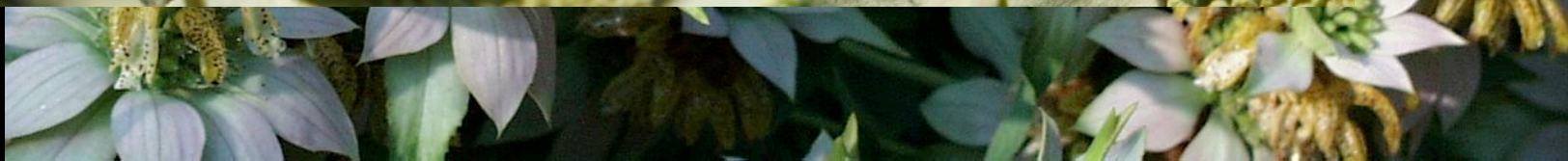
Hydrangea paniculata



Hydrangea quercifolia



Pycnanthemum, Mountain Mint



Agastache



Skipper Moth on *Agastache*



Other kinds of wildlife













WAS THAT A SQUIRREL?







Create your own wildlife!







Bird feeder?
“Bear” feeder!

Respect wildlife!



Important to coordinate wildlife with your landscape



Thanks for your attention!

For a copy of this presentation:

brycehlane.com or

brycehortlane@me.com

